

# The John Cunningham Student Centre

The former Stevenson Library has been upgraded to create the new John Cunningham Student Centre delivering essential student amenities and learning spaces with a focus on learning support, student counselling, academic research and professional learning.



New John Cunningham Student Centre October 2024

## Why upgrade the building?

The Stevenson Library building and facilities were aged, requiring ongoing maintenance and offering limited functionality for contemporary teaching and learning practices. This pivotal space was in need of an upgrade to make it a more suitable facility for teaching and learning in the 21st Century, with a particular focus on learning support, student counselling, academic research and professional learning.

The former library building was completed in 1988 and was imposing, block-like, flat-roofed, and without features or a main entrance. It was an institutional building not well suited to a contemporary education experience and no longer fit for purpose.

This project prioritises the delivery of essential student amenities and learning spaces as well as bringing the building in line with NSW Government disability inclusion guidelines.



# The vision

Located at the heart of our senior school campus, the new John Cunningham Student Centre delivers a state-of-the-art educational facility and also acts as a physical embodiment of the College’s Scottish heritage.

We have used an architectural style which reflects both the heritage of the College and the purpose of the building. The vision for the exterior of the John Cunningham Student Centre is a true representation of the Scottish Baronial style of the 16th Century and as revived in the 19th Century.

To ensure the exterior concept remained true to its heritage, the College engaged Dr Alistair Disley, a globally recognised expert in Scottish architecture. Dr Disley provided an extensive report and recommendations which were incorporated to ensure the design concept is representative of the style.

While the exterior is an authentic representation of the Scottish Boronial style, the internal fit-out would incorporate the latest research creating optimal learning environments. The College engaged design firm The Invisible Lab, an interdisciplinary design team, to inform the creation of our new learning spaces.



**New John Cunningham Student Centre October 2024**



**Oval Perspective – Old Stevenson Library building**



**Oval perspective - New John Cunningham Student Centre October 2024**

The College buildings skirting the oval are largely correlated either in scale, detailing or texture. Except for the old Stevenson Library building, all face the oval and provide a pathway of travel within the College grounds in a north-south direction. The Library building interrupted pedestrian flows requiring students to exit College grounds and use the footpath on Victoria Road to move between buildings.

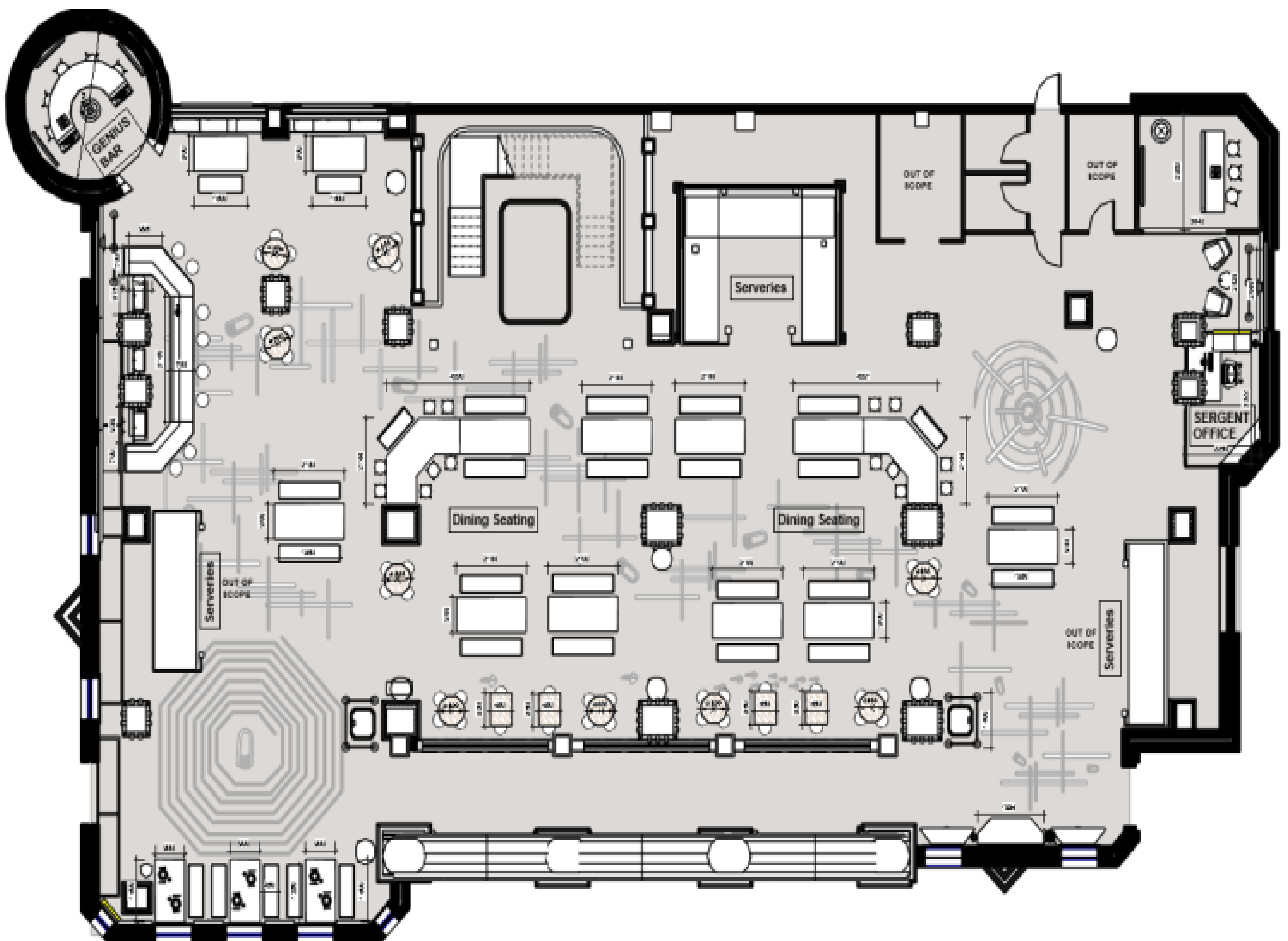


# The key benefits

## The new John Cunningham Student Centre delivers a number of key benefits to students, staff and the broader community, including:

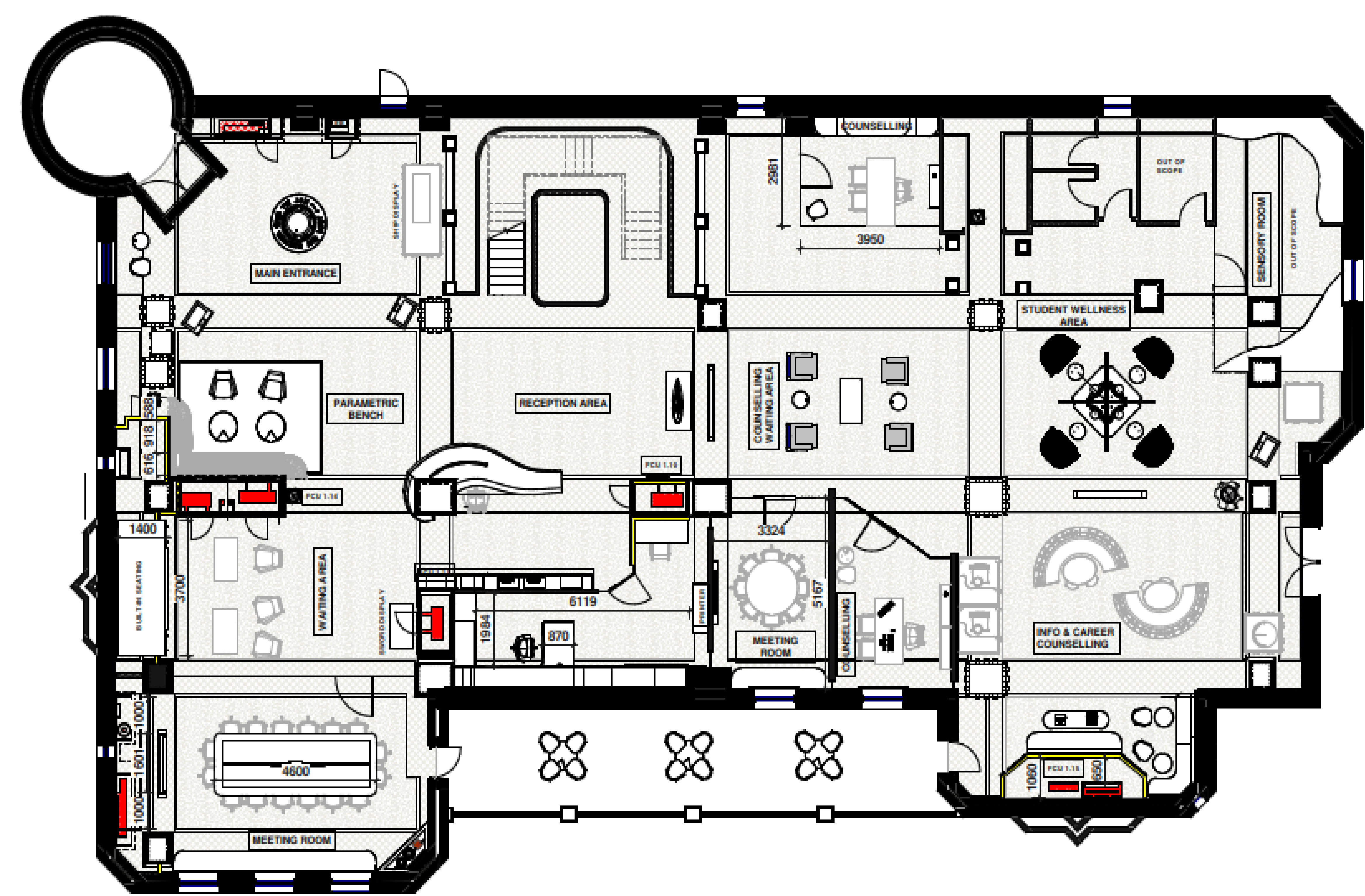
- improved counselling, learning enrichment, academic research and study facilities
- new multi-functional learning spaces
- new catering facilities for day students
- additional toilet facilities
- improved accessibility for disabled students and staff through the introduction of lifts
- a new north-south access route, improving pedestrian flow throughout the College and allowing students to move between buildings, reducing the use of external public footpaths
- dedicated pastoral care and counselling facilities for students
- new multi-functional debating, communication, networking, and study spaces.

## GROUND FLOOR SKETCH



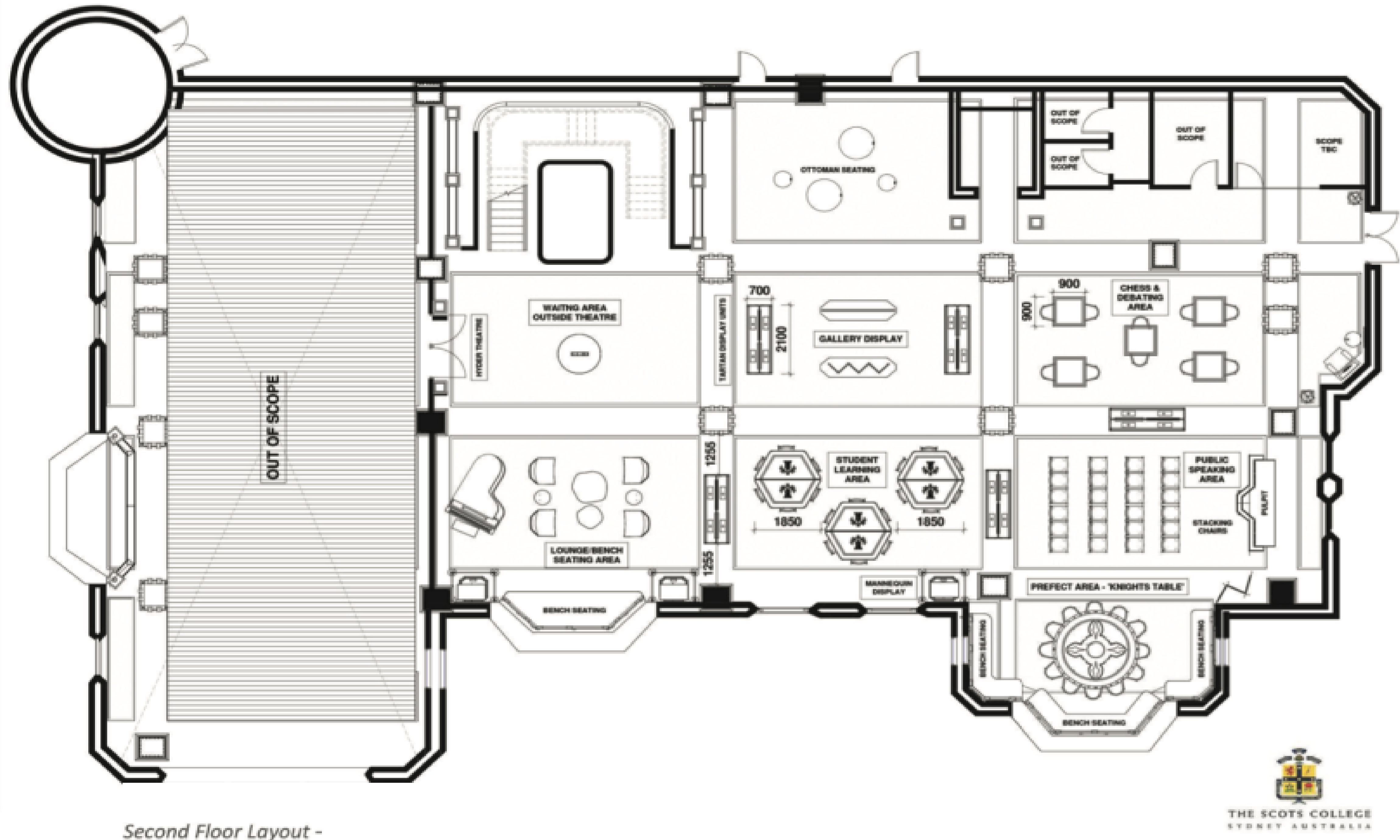
# The key benefits

## FIRST FLOOR SKETCH

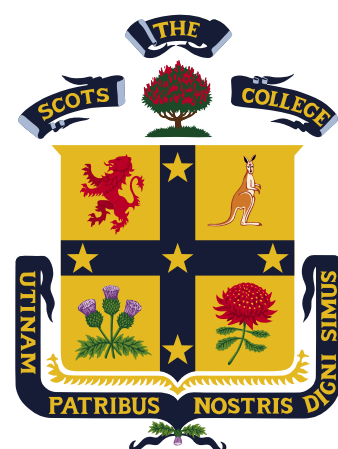


First floor includes Reception, Counselling and Learning Enrichment spaces

## SECOND FLOOR SKETCH

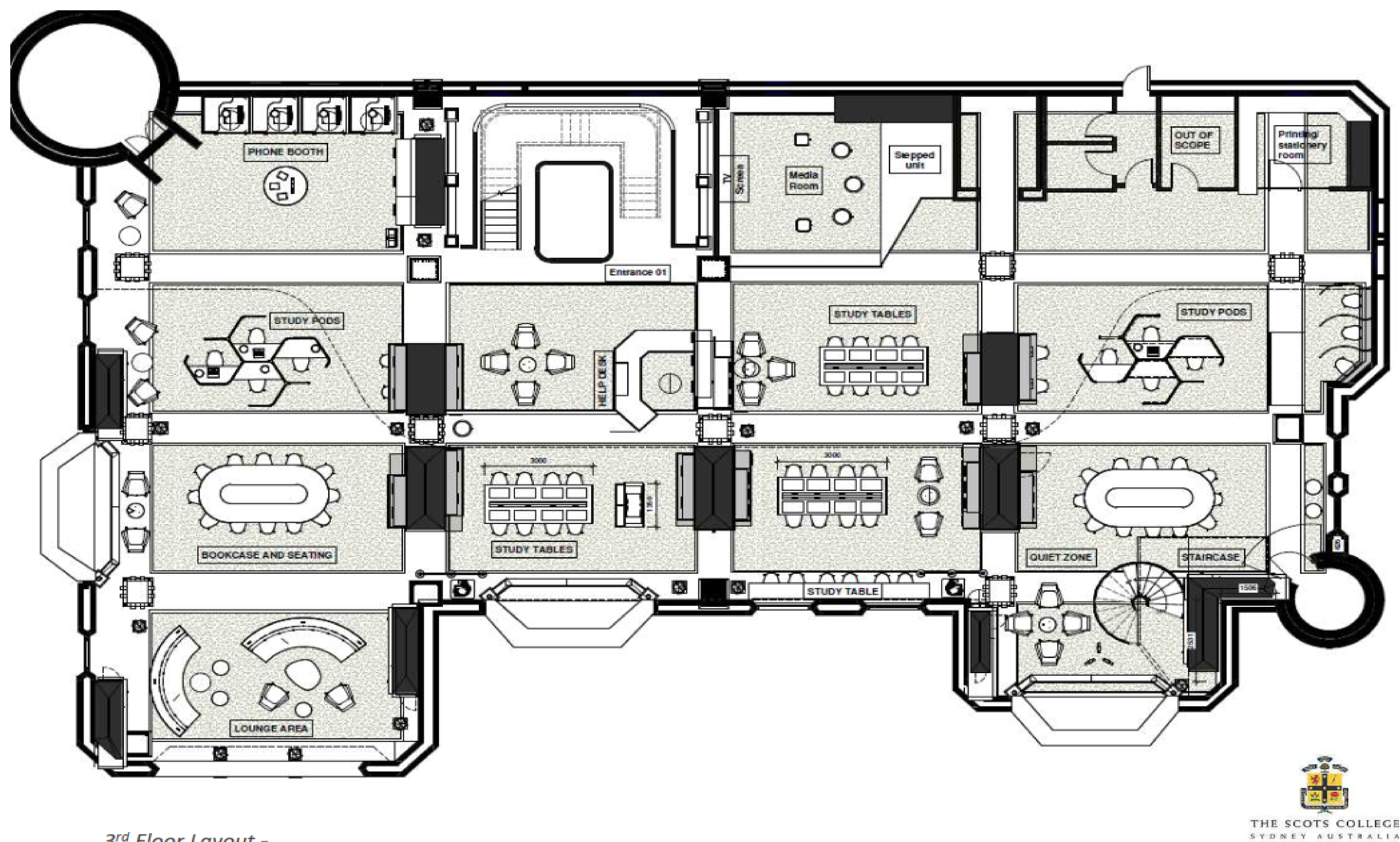


Second floor – Multi-functional learning spaces



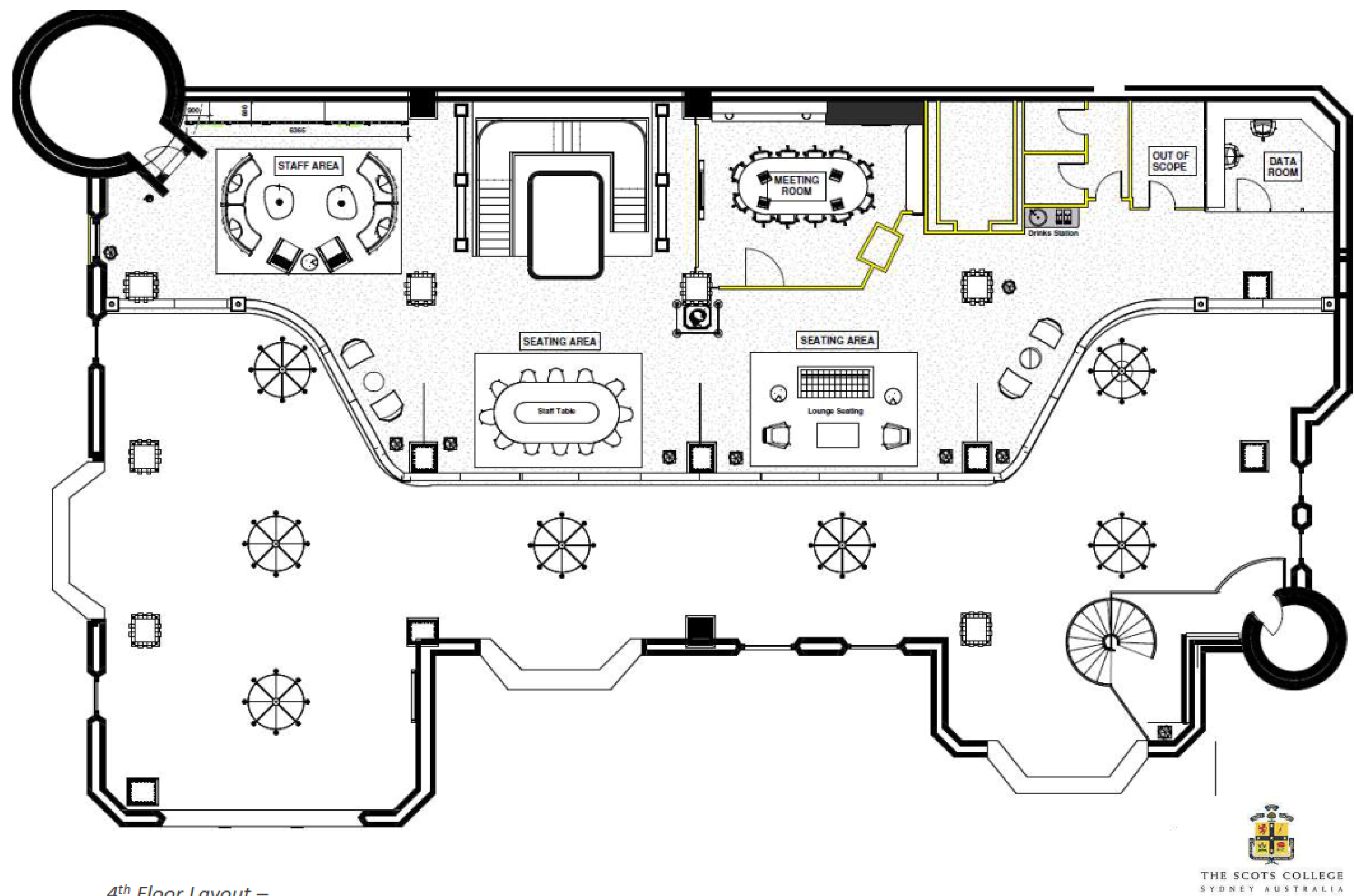
# The key benefits

## THIRD FLOOR SKETCH

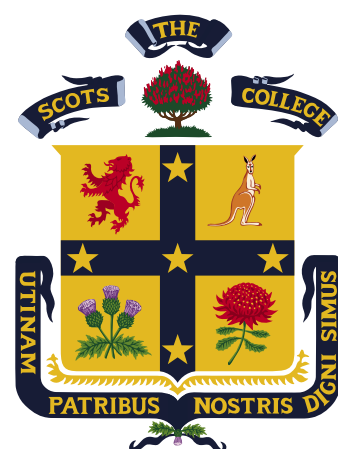


Third floor – College Library

## FOURTH FLOOR SKETCH



Fourth floor – Mezzanine



# The vision



New John Cunningham Student Centre October 2024



New John Cunningham Student Centre October 2024 viewed from the oval



# FAQs



## Why has the College elected to upgrade the Stevenson Library before adding ‘community-friendly’ features such as on-site parking or pick-up/drop-off zones?

The delivery of the new John Cunningham Student Centre will bring information, pastoral care and student support services into one accessible location.

It will add significant capacity in flexible space, as well as new dining and toilet facilities needed to accommodate students.

Importantly, this project prioritises the wellbeing of our students and addresses issues such as poor pedestrian flow, access and amenities.

When complete, the facilities in the new John Cunningham Student Centre will allow the college to continue to operate during future construction of on-site parking or pick-up and drop-off zones.

Changes to the building will also create a new north-south access route through the school, allowing students to move between facilities within College grounds, rather than via Victoria Road footpaths.

## Is the upgrade related to a plan to increase student numbers?

No increase in current student numbers is being proposed as part of the Stevenson Library upgrade.

## How is the project being funded?

The Scots College receives no government funding for capital work and therefore building work must be funded from either donations or bank loans.

As a not-for-profit entity there is limited capacity for bank lending and therefore the College would fund the majority of the upgrade through fundraising and donations.

## Is this part of a masterplan?

The Stevenson Library upgrade is part of the 2013-2023 masterplan. The College has commenced a process of revisiting its 2013 masterplan and this will be part of a separate design and planning process including further community consultation.

The College is committed to keeping the community informed and will provide regular updates about any future plans.



John Cunningham Student Centre October 2024



# What to expect during construction

On-site work to prepare the site for construction commenced in December 2019 and demolition and piling works through to March 2021.

Construction started in June 2021 and is now complete.

The internal fit-out continues and the centre will be fully operational in late 2024.

A Community Communications Plan covering site preparation and construction can still be viewed on the College website.

A Construction Environmental Management Plan and Construction Traffic Management Plan were prepared and implemented in accordance with the conditions of approval. The plans approved by the Department of Planning and Environment have been implemented throughout construction and can be viewed on the College website.

## Hours of work

Monday to Friday 7:00am – 6:00pm  
Saturdays 8:00am – 1:00pm  
No work will be carried out on Sundays and Public Holidays

## Construction vehicle access

Construction vehicle site access via Cranbrook Lane. All vehicles make their way to the site from the West via New South Head Road, turning right into Victoria Road, left into Cranbrook Road and left again into Cranbrook Lane. Vehicles leaving the site use the same route in reverse.

Traffic controllers will be in place when necessary at the Cranbrook Road/Cranbrook Lane intersection and the Cranbrook Lane access gate.

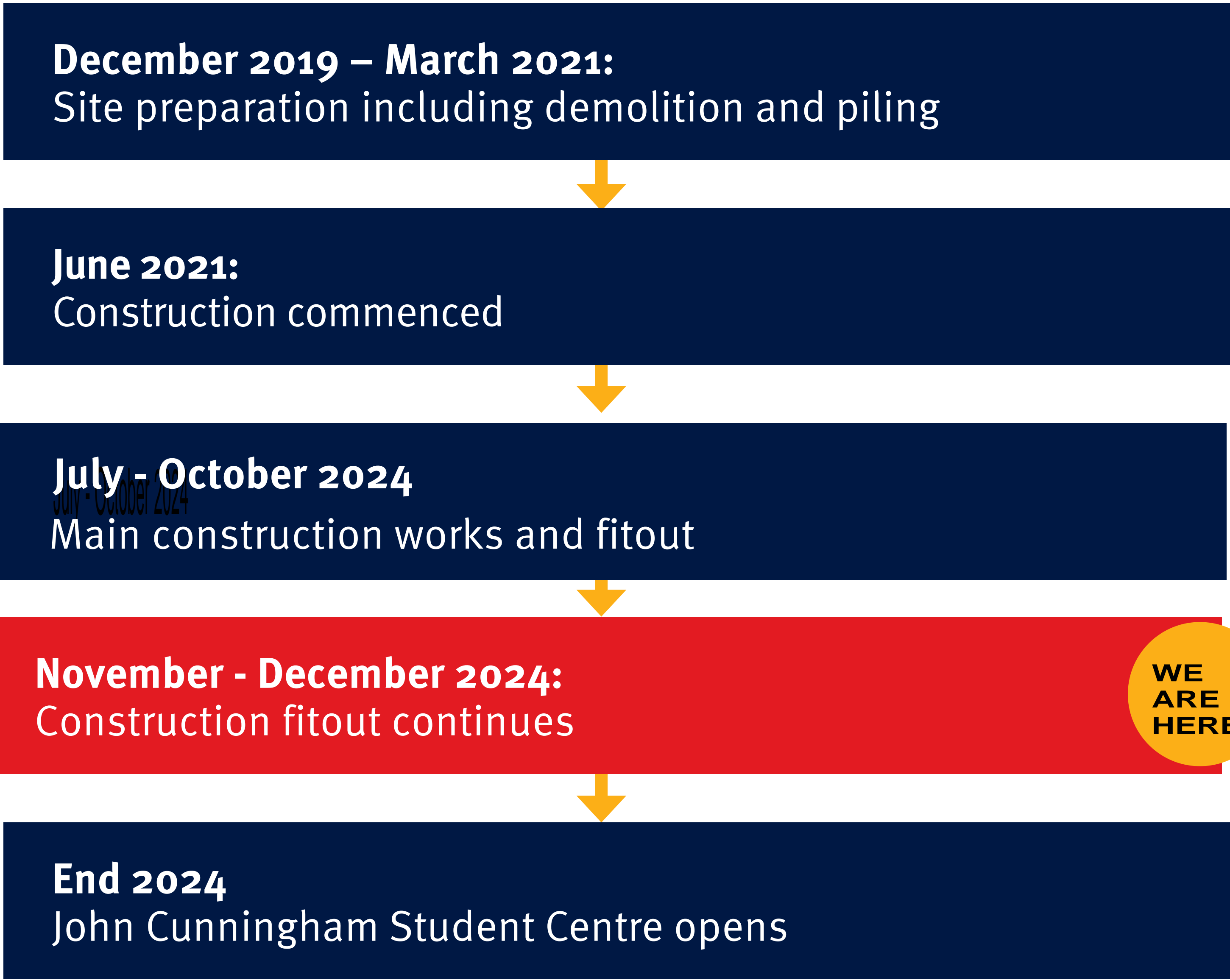
## Find out more and keep up to date

- Visit the College website [scots.college](https://scots.college)
- Email us at [jcsc@scots.college](mailto:jcsc@scots.college)
- Call us on 02 9391 7600

## The project team who have planned and are delivering this project include:

- Project Coordination:** TSC Director of Operations and Infrastructure  
**Project Management:** EPM Projects  
**Architectural Design:** JCA Architects  
**Interior Design:** The Invisible Lab & Five Spaces Design  
**Town Planning:** BBC Consulting Planners  
**Traffic Planning:** PT Consultants  
**Community Consultation:** WSP formerly Elton Consulting

## Construction timeline



View from oval July 2024 – Lang Walker Business Centre and the new John Cunningham Student Centre nearing completion

