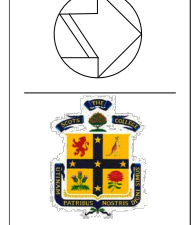


GENERAL NOTES

- Consult with ALL relevant authorities prior to commencing works
- DO NOT scale. All dimensions are nominal + should be confirmed on site prior to commencement
- Obtain setting out information from architect PRIOR to commencement
- Bring discrepancies to the immediate attention of the Architect
- If unsure of any aspect of the works seek instruction from the Architect before proceeding
- All drawings must be read in conjunction with the council consent, specification, schedules, site notes + instructions issued by the Architect
- This material / work is protected by Copyright

CONSULTANTS

- TPGS Quantity Surveyors
- BBC Planning Consultant
- ACV Mechanical Engineer
- Code Performance Accessibility Consultant
- PSE Structural Engineer
- BCG BCA Consultant
- JCI Hydraulic Engineer
- Riley Mac Fire Consultant
- MCD Fire Engineer
- LINEA Electrical Engineer
- BCG BCA Consultant
- Downridge Williams Surveyors



CLIENT
 STEVEN ADAMS
 THE SCOTS COLLEGE

PROJECT
 MAJOR ALTERATIONS + ADDITIONS TO THE STEVENSON LIBRARY (SSD 8922)

ADDRESS
 29-53 Victoria Rd
 Bellevue Hill, NSW

DRAWING TITLE
 GF + FF DEMOLITION PLAN

DRAWN BY
 JC, CF, JW, ZW

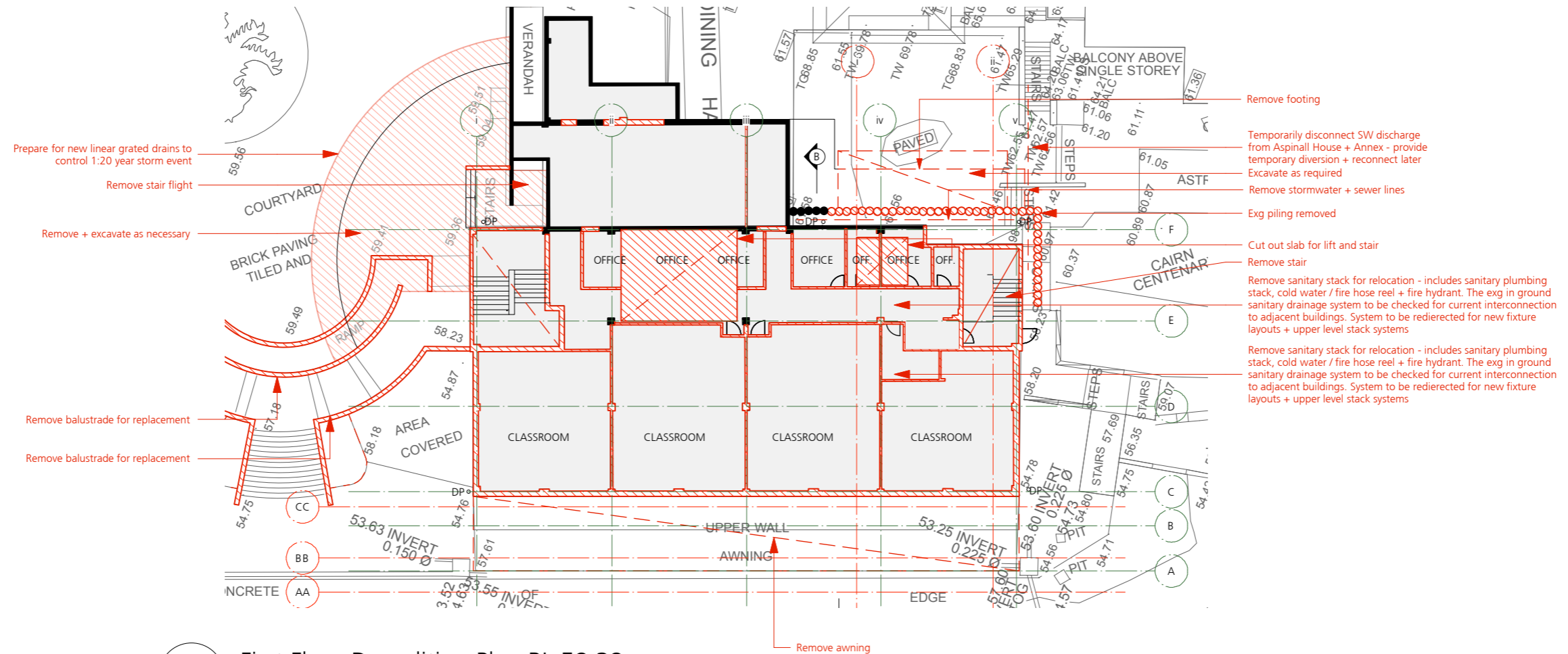
SCALE
 1:300 @ A3

ISSUE
 SEARS

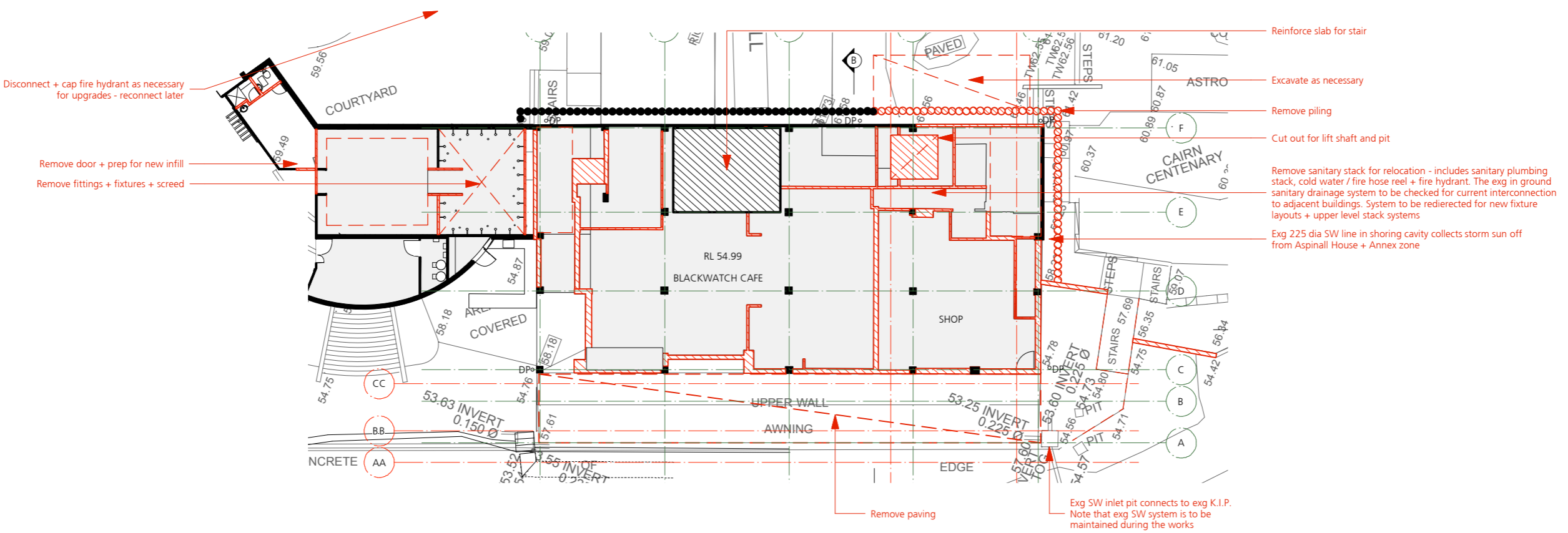
REVISION
 S1

DATE
 JUNE 2018

DRAWING NUMBER
 SSD1.02/17-150



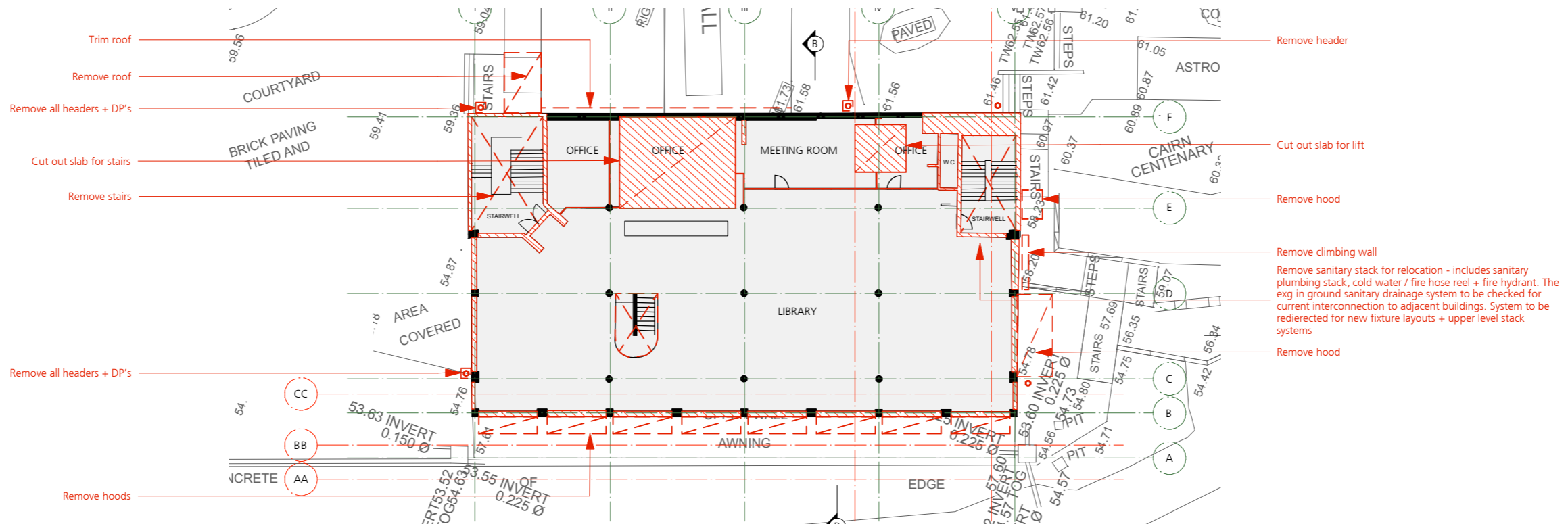
1 First Floor Demolition Plan RL 58.38
 Scale: 1:300



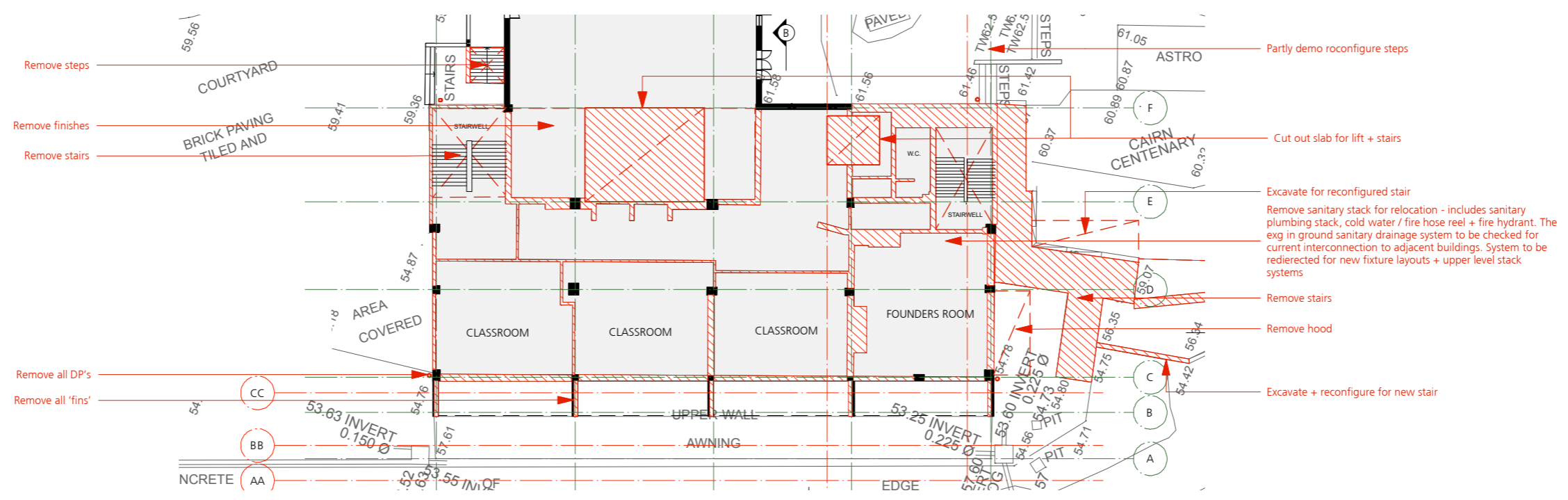
2 Ground Floor Demolition Plan RL 54.99
 Scale: 1:300

LEGEND:

- EXISTING SLAB
- DEMOLISH
- REINFORCE



1 Third Floor Demolition Plan EXG RL 65.275
 Scale: 1:300



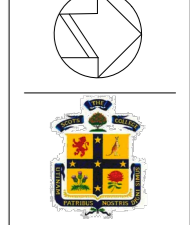
2 Second Floor Demolition Plan EXG RL 61.57
 Scale: 1:300

LEGEND:

□ EXT SLAB ▨ DEMOLISH

- GENERAL NOTES**
- Consult with ALL relevant authorities prior to commencing works
 - DO NOT scale. All dimensions are nominal + should be confirmed on site prior to commencement
 - Obtain setting out information from architect PRIOR to commencement
 - Bring discrepancies to the immediate attention of the Architect
 - If unsure of any aspect of the works seek instruction from the Architect before proceeding
 - All drawings must be read in conjunction with the council consent, specification, schedules, site notes + instructions issued by the Architect
 - This material / work is protected by Copyright

- CONSULTANTS**
- TPGS Quantity Surveyors
 - BBC Planning Consultant
 - ACV Mechanical Engineer
 - Code Performance Accessibility Consultant
 - PBE Structural Engineer
 - BCC BCA Consultant
 - JCL Hydraulic Engineer
 - Riley Mac Fire Consultant
 - MCD Fire Engineer
 - UMEA Electrical Engineer
 - BCC BCA Consultant
 - Doveridge Williams Surveyors



CLIENT
 STEVEN ADAMS
 THE SCOTS COLLEGE

PROJECT
 MAJOR ALTERATIONS + ADDITIONS TO THE STEVENSON LIBRARY (SSD 8922)

ADDRESS
 29-53 Victoria Rd
 Bellevue Hill, NSW

DRAWING TITLE
 SECOND + THIRD FLOOR
 DEMOLITION PLAN

DRAWN BY
 JC, CF, JW, ZW

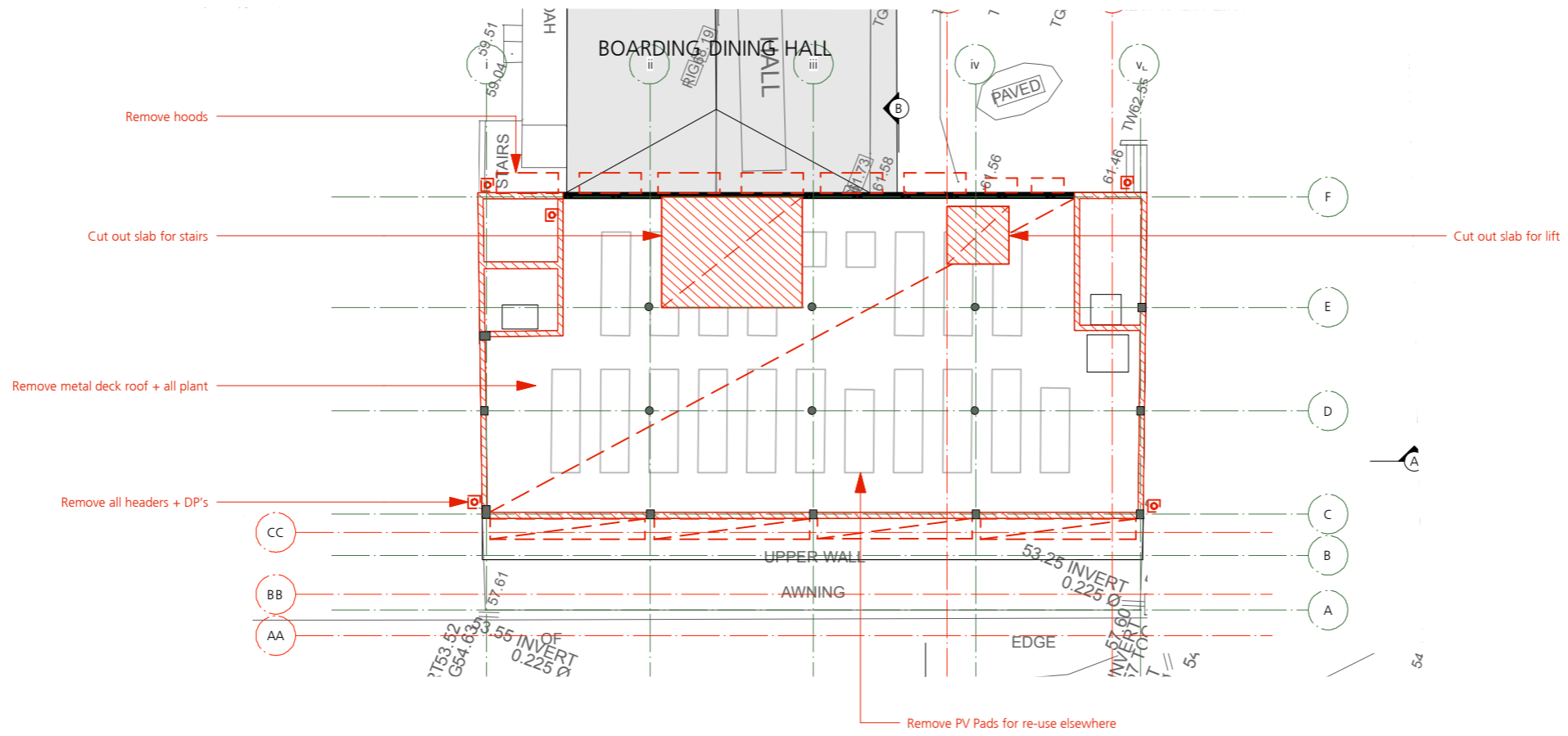
SCALE
 1:300 @ A3

ISSUE
 SEARS

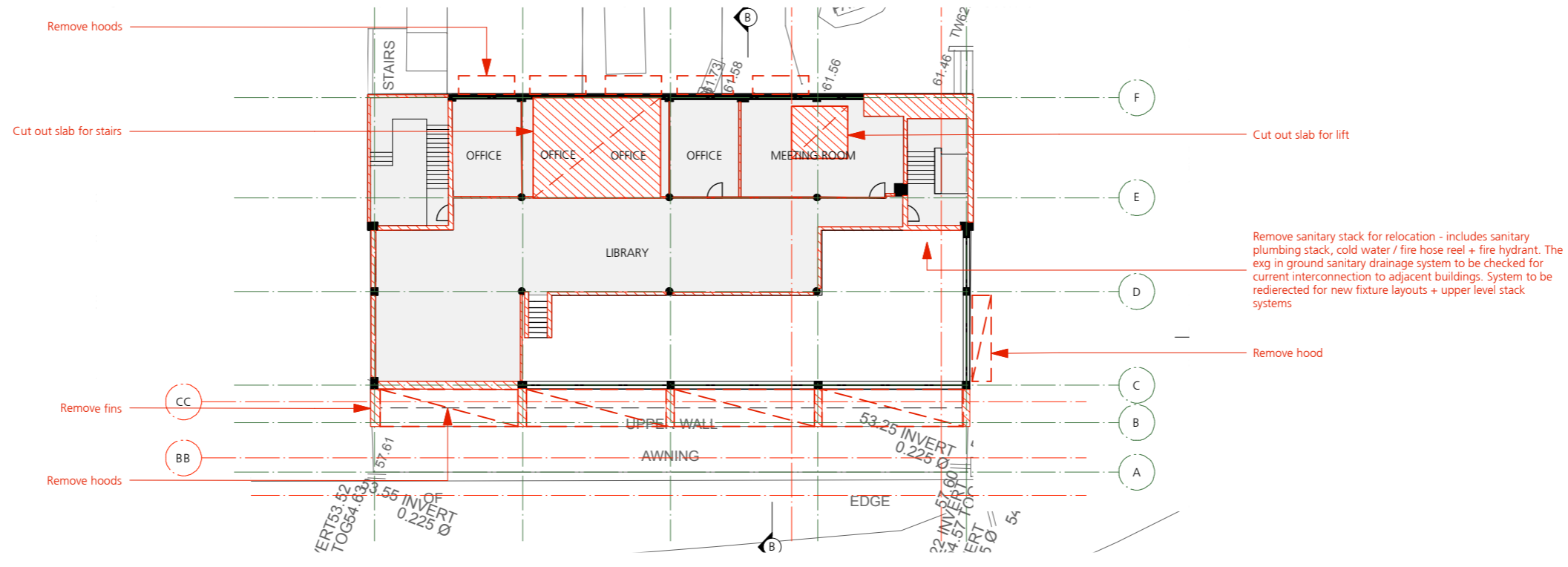
REVISION
 S1

DATE
 JUNE 2018

DRAWING NUMBER
 SSD1.02/17-151



1 Roof Demolition Plan EXG RL 71.39
Scale: 1:300

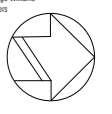


2 Fourth Floor Demolition Plan EXG RL 67.95
Scale: 1:300

LEGEND:
 EXISTING
 DEMOLISH
 SLAB

GENERAL NOTES
 - Consult with ALL relevant authorities prior to commencing works
 - DO NOT scale. All dimensions are nominal + should be confirmed on site prior to commencement
 - Obtain setting out information from architect PRIOR to commencement
 - Bring discrepancies to the immediate attention of the Architect
 - If unsure of any aspect of the works seek instruction from the Architect before proceeding
 - All drawings must be read in conjunction with the council consent, specification, schedules, site notes + instructions issued by the Architect
 - This material / work is protected by Copyright

- CONSULTANTS**
- TPGS
Quantity Surveyors
 - BBC
Planning Consultant
 - ACV
Mechanical Engineer
 - Code Performance
Accessibility Consultant
 - PBE
Structural Engineer
 - BCG
BCA Consultant
 - JCL
Hydraulic Engineer
 - Riley Mac
Fire Consultant
 - MCD
Fire Engineer
 - IMEA
Electrical Engineer
 - BCG
BCA Consultant
 - Doveridge Williams
Surveyors



CLIENT
 STEVEN ADAMS
 THE SCOTS COLLEGE

PROJECT
 MAJOR ALTERATIONS + ADDITIONS TO
 THE STEVENSON LIBRARY (SSD 8922)

ADDRESS
 29-53 Victoria Rd
 Bellevue Hill, NSW

DRAWING TITLE
 FOURTH FLOOR + ROOF
 DEMOLITION PLAN

DRAWN BY
 JC, CF, JW, ZW

SCALE
 1:300 @ A3

ISSUE
 SEARS

REVISION
 S1

DATE
 JUNE 2018

DRAWING NUMBER
 SSD1.02/17-152